



# Bulletin Officiel de la Cote

## BOURSE REGIONALE DES VALEURS MOBILIERES S.A.

SOCIETE ANONYME AU CAPITAL DE FCFA 3 062 040 000  
 Siège Social: Abidjan - COTE D'IVOIRE  
 Siège Social : 18, Rue Joseph Anoma (Rue des Banques) – 01 B.P. 3802 Abidjan  
 Tel: (225) 20 326 685 / 20 326 686 Fax : (225) 20 326 684  
 Site Internet: [www.brvm.org](http://www.brvm.org)

Bulletin du 02 mars 2012

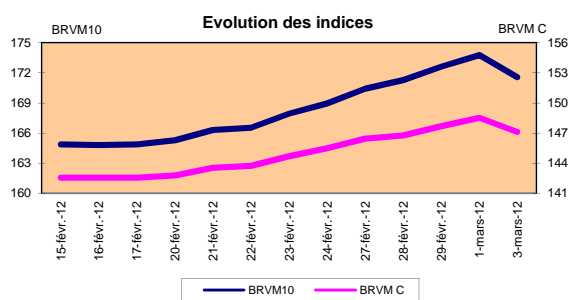
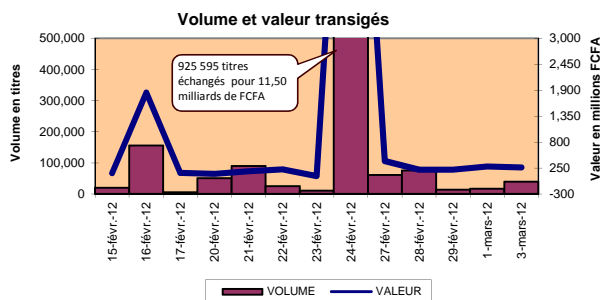
Vol : 15 N° : 44

### Séance du 02 mars 2012

#### Indices de référence

Base = 100 au 15 septembre 1998	Fermeture	Variation		Fermeture Précédente	Capitalisation Boursière en F CFA
		en valeur	en %		
BRVM 10	171.57	-2.20	-1.27%	173.77	2,604,022,797,434
BRVM Composite	147.12	-1.40	-0.94%	148.51	3,368,013,874,869

Capitalisation du marché obligataire ( en F CFA)	800,349,398,400
--	-----------------



#### Indices sectoriels

Base = 100 au 14 juin 1999	Fermeture	Variation		Fermeture Précédente	Nombre de sociétés
		en valeur	en %		
BRVM - Industrie	78.23	0.05	0.06%	78.18	13
BRVM - Services Publics	369.17	-0.06	-0.02%	369.23	4
BRVM - Finances	52.69	-2.00		54.69	8
BRVM - Transport	201.55	0.00	0.00%	201.55	2
BRVM - Agriculture	454.74	-3.03	-0.66%	457.77	4
BRVM - Distribution	105.35	1.20	1.15%	104.16	7
BRVM - Autres Secteurs	59.26	0.00	0.00%	59.26	1

#### Sommaire du marché

	Volume Transigé	Valeur Totale Transigée (F CFA)	Nombre de Transactions	Nombre de titres échangés	Titres		
					Gains	Pertes	Inchangés
Actions	39,153	261,706,654	98	20	7	4	9
Obligations	319	3,185,200	7	3	0	0	3
Droits	0	0	0	0	0	0	0

Titres les plus actifs			Plus fortes hausses			Plus fortes baisses		
Titres	Volume	Cours	Titres	Cours	Variation	Titres	Cours	Variation
ECOBANK TRANS. INCORP. TG	31,339	16,125	CFAO CI	16,125	1125	SAPH CI	47,100	-1,900
PALM CI	5,674	70,000	SOGB CI	70,000	1000	SOGB CI	42,000	-1,000
SONATEL SN	525	1,960	PALM CI	20,500	500	CIE CI	24,900	-90
BANK OF AFRICA NG	314	32,100	CEDA CI	1,960	260	ECOBANK TRANS. INCORP. TG	36	-2
			SICABLE CI	32,100	100			

#### Indices boursiers internationaux

Places financières africaines	Indices	Clôture 2-mars-12	Variation Séance précédente	Indices au 30-déc.-11	Autres places financières	Indices	Clôture 2-mars-12	Variations Séance précédente	Indices au 30-déc.-11
ACCRA (*)	GSE	1,028.11	11.64%	969.03	PARIS (**)	CAC 40	343503.2564.7	0.10%	3.159,81
CASABLANCA (*)	MADEX	9,367.47	-0.50%	9011.57	LONDRES (*)	FOOTSIE 100	5,924.51	-0.11%	5.572,28
LAGOS (*)	NSE	20,193.40	0.35%	20,730.63	NEW YORK (*)	DJIA	12,960.30	0.22%	12.217,56
TUNIS (*)	TUNINDEX	4,785.46	0.35%	4,722.25	TOKYO (*)	NIKKEI 225	9,777.03	0.72%	8.455,35

(\*) Indices de la veille

(\*\*) Indices à 11 H00GMT

#### Coupons annoncés

Symbole	Titre	Coupon		
		Montant net (FCFA)	Date de détachement	Date de paiement

ND: Non Disponible

MARCHÉ DES ACTIONS

Séance du 02 mars 2012

Symbole	Titre	Classe de Capitalisation Boursière	Qté	Cours		Qté	Cours du jour	Volume	Valeur	Cours Précéd.	Séance prochaine		Dernier dividende Payé		Cours extrêmes de l'année		
				Ach. / Vend.							Cours Référence	Ecart maximum	Montant net	Date	Plus Bas	Plus Haut	
<b>SECTEUR - INDUSTRIE</b>																	
CABC	SICABLE CI	C	29	32100 /			32,100	10	321,000	32,000	32,100	29,695	34,505	5,220	29-août-11	29,000	32,100
CDAC	CEDA CI	C	5	1960 /			1,960	20	39,200	1,700	1,960	1,815	2,105	630	07-juil-00	1,600	4,165
FTSC	FILTISAC CI	C	415	2600 / 2650	4,539	2,650	32	84,800	2,650	2,650	2,455	2,845	321	19-juil-10	2,500	2,700	
NEIC	NEI CI	C	8	3000 /			NC			3,000	3,000	2,775	3,225	225	28-juin-01	3,000	3,000
NTLC	NESTLE CI	B	1	43000 / 48000	10	NC				43,000	43,000	39,775	46,225	630	12-août-11	43,000	48,000
SEMC	CROWN SIEM CI	B		/ 22000	18	NC				22,000	22,000	20,350	23,650	675	28-sept-11	21,995	23,640
SIVC	SIVOVA CI	C	29	6700 / 7000	24	7,000	13	91,000	7,000	7,000	6,475	7,525	540	13-sept-11	6,700	7,200	
SLBC	SOLIBRA CI	A	1	185220 /			NC			172,300	172,300	159,380	185,220	16,380	07-juil-11	163,000	172,300
SMBC	SMB CI	B	589	19000 / 20000	20	19,000	11	209,000	19,000	19,000	17,575	20,425	344	14-sept-11	19,000	20,425	
STBC	SITAB CI	B	15	65100 /			65,100	49	3,189,900	65,000	65,100	60,220	69,980	8,940	21-juil-11	63,000	65,100
TTRC	TRITURAF CI-Ste en Liquidation	C		/ 925	50	NC				1,000	1,000	925	1,075	1,440	19-juil-02	1,000	1,000
UNLC	UNILEVER CI	B	4	37995 / 37995	4	NC				38,505	38,505	35,620	41,390	2,421	02-juil-10	38,000	38,515
UNXC	UNIWAX CI	C		/ 7000	71	7,000	4	28,000	7,000	7,000	6,475	7,525	1,350	06-juin-03	7,000	9,675	
<b>TOTAL</b>							<b>139</b>		<b>3,962,900</b>								
<b>SECTEUR - SERVICES PUBLICS</b>																	
CIEC	CIE CI	B	2	24000 / 24900	2	24,900	97	2,415,300	24,990	24,900	23,035	26,765	1,962	04-juil-11	16,500	25,850	
ONATBF	ONATEL BF	A		/ 40000	188	NC				40,000	40,000	37,000	43,000	2,625	15-juil-11	40,000	44,000
SDCC	SODE CI	B	58	26000 / 28975	2	26,000	36	936,000	26,000	26,000	24,050	27,950	2,385	04-juil-11	18,000	28,975	
SNTS	SONATEL SN	A	4	126000 / 150000	177	126,000	525	66,150,000	126,000	126,000	116,550	135,450	12,600	28-avr-11	120,000	126,000	
<b>TOTAL</b>							<b>658</b>		<b>69,501,300</b>								
<b>SECTEUR - FINANCES</b>																	
BICC	BICI CI	B	1,289	34000 /			NC			33,005	33,005	30,530	35,480	432	24-oct-11	31,000	33,005
BOAB	BANK OF AFRICA BN	B	20	49500 /			NC			49,055	49,055	45,380	52,730	3,255	02-mai-11	48,000	49,055
BOABF	BANK OF AFRICA BF	B	831	36000 / 36000	6	NC				35,600	35,600	32,930	38,270	2,125	03-mai-11	32,000	35,600
BOAC	BANK OF AFRICA CI	B	12	27000 / 27500	289	27,000	60	1,620,000	27,000	27,000	24,975	29,025	1,800	02-juin-10	26,800	29,005	
BOAN	BANK OF AFRICA NG	B	50	31000 / 31500	303	31,500	314	9,891,000	31,500	31,500	29,140	33,860	2,250	13-avr-11	30,000	33,000	
ETIT	ECOBANK TRANS. INCORP. TG (*)	A	105,556	36 / 38	243,435	36	31,339	1,128,204	38	36	34	38	1,828	27-juil-11	36	38	
SAFC	SAFCA CI	C	20	17000 /			NC			17,000	17,000	15,725	18,275	1,440	29-juil-11	17,000	17,005
SGBC	SGB CI	A	38	41500 / 42000	457	42,000	127	5,334,000	43,000	42,000	38,850	45,150	3,992	09-sept-11	35,100	45,000	
<b>TOTAL</b>							<b>31,840</b>		<b>17,973,204</b>								
<b>SECTEUR - TRANSPORT</b>																	
SDSC	BOLLORE AFRICA LOGISTICS CI	B	31	40000 / 43105	74	40,000	34	1,360,000	40,000	40,000	37,000	43,000	3,428	08-juin-11	40,000	48,000	
SVOC	MOVIS CI	C	5	3115 /			NC			2,900	2,900	2,685	3,115	270	05-juil-99	2,700	2,900
<b>TOTAL</b>							<b>34</b>		<b>1,360,000</b>								
<b>SECTEUR - AGRICULTURE</b>																	
PALC	PALM CI	A	1,750	20050 / 20500	30	20,500	5,674	116,317,000	20,000	20,500	18,965	22,035	225	21-juil-00	15,000	20,500	
SICC	SICOR CI	C	5	3795 /			NC			3,795	3,795	3,515	4,075	1,919	25-sept-00	3,795	3,795
SOGC	SOGB CI	A	1,589	70000 / 73000	1,350	70,000	720	50,400,000	69,000	70,000	64,750	75,250	8,334	27-juin-11	52,000	70,000	
SPHC	SAPH CI	A	78	47100 / 48900	50	47,100	30	1,413,000	49,000	47,100	43,570	50,630	6,930	22-sept-11	39,000	49,000	
<b>TOTAL</b>							<b>6,424</b>		<b>168,130,000</b>								
<b>SECTEUR - DISTRIBUTION</b>																	
ABJC	SERVAIR ABIDJAN CI	C	10	9005 / 9995	15	NC				9,000	9,000	8,325	9,675	225	13-juil-00	7,445	9,500
BNBC	BERNABE CI	C	1	29500 /			NC			29,000	29,000	26,825	31,175	3,150	27-juil-11	25,500	29,000
CFAC	CFAO CI	B	192	16125 / 17000	50	16,125	8	129,000	15,000	16,125	14,920	17,330	987	21-juil-11	14,000	16,505	
PRSC	SDA CI	B	50	80000 /			NC			80,000	80,000	74,000	86,000	11,250	24-juin-11	80,000	84,000
SHEC	SHELL CI	B	40	13005 /			13,005	50	650,250	13,000	13,005	12,030	13,980	828	31-août-11	12,500	13,490
SRIC	SARI CI	C	1	35000 /			NC			35,000	35,000	32,375	37,625	2,309	21-juil-11	33,245	35,735
TTLIC	TOTAL CI	B	3	71000 /			NC			70,500	70,500	65,215	75,785	2,170	10-août-11	70,000	74,000
<b>TOTAL</b>							<b>58</b>		<b>779,250</b>								
<b>AUTRES SECTEURS</b>																	
STAC	SETAO CI	C		/ 4800	94	NC				4,800	4,800	4,440	5,160			4,800	4,800
<b>TOTAL</b>																	
<b>TOTAL - Marché des actions</b>							<b>39,153</b>	<b>261,706,654</b>									

Légende:

(\*) le capital de la société contient des actions de priorités convertibles au bout de 3 - 5 ans en actions ordinaires.

Mentions : NC: Non Coté Ex: Ex-coupon ou Ex-droit SP: Suspendu DIF: Différé

Classe de Capitalisation Boursière :

- A: Sociétés ayant une capitalisation boursière Supérieure à 100 milliards FCFA.
- B: Sociétés ayant une capitalisation boursière Comprise entre 10 milliards FCFA et 100 milliards FCFA.
- C: Sociétés ayant une capitalisation boursière Inférieure ou égale à 10 milliards FCFA.

MARCHÉ DES DROITS

Symbole	Titre	Qté	Cours		Qté	Cours du jour	Volume	Valeur	Cours Précéd.	Séance prochaine		Parité	Période de Négociation	
			Ach. / Vend.							Cours Référence	Ecart maximum		Début	Fin
<b>TOTAL-Marché des droits</b>														

Parité: y pour x signifie y droits pour x action nouvelle

MARCHÉ DES OBLIGATIONS

Séance du 02 mars 2012

Symbole	Titre	Qté	Cours Ach. / Vend.	Qté	Cours du jour	Volume	Valeur	Cours Précéd.	Séance prochaine		Coupon couru	Type Amort	Coupon d'intérêt			
									Cours Référence	Ecart max			Période	Montant net	Eché.	
<b>OBLIGATIONS REGIONALES</b>																
BIDC.O1	BIDC 5.60% 2006-2013				NC			10,000	10,000	9,250	10,750	312.13	ACD	A	560.000	11-août
BIDC.O2	BIDC 6.75 2010-2017	188	10000 /		10,000	25	250,000	10,000	10,000	9,250	10,750	277.40	ACD	S	337.500	04/04-10
BOAB.O2	BOA BENIN 6.20% 2009-2014		/ 10000	60	NC			9,900	9,900	9,160	10,640	402.86	AC	A	582.800	23-juin
BOABF.O2	BOA BURKINA F. 6.20% 2009-2014				NC			10,000	10,000	9,250	10,750	402.86	AC	A	582.800	23-juin
BOAC.O1	BOA - CI 6.20% 2009-2014				NC			10,000	10,000	9,250	10,750	420.01	AC	A	607.600	23-juin
BOAD.O7	BOAD 5% 2005-2013				NC			10,000	10,000	9,250	10,750	89.04	ACD	A	500.000	28-déc
BOAD.O9	BOAD 5% 2006-2014				NC			10,000	10,000	9,250	10,750	32.88	ACD	A	500.000	07-févr
BOAD.O10	BOAD 4.75% 2006-2012				NC			10,000	10,000	9,250	10,750	31.23	ACD	A	475.000	07-févr
BOAM.O2	BOA MALI 6.50% 2009-2014				NC			10,000	10,000	9,250	10,750	390.91	AC	A	565.500	23-juin
BOAN.O1	BOA NIGER 6.50% 2009-2014				NC			9,850	9,850	9,115	10,585	390.91	AC	A	565.500	23-juin
BOAS.O1	BOA SENEGAL 6.50% 2009-2014				NC			9,800	9,800	9,065	10,535	422.36	IF	A	611.000	23-juin
CAAB.O3	CAA BENIN 6.50% 2011-2016				NC			10,000	10,000	9,250	10,750	202.46	ACD	A	650.000	09-nov
CLTB.O2	CELTEL BURKINA 6.35% 2007-2013				NC			10,000	10,000	9,250	10,750	22.83	ACD	S	298.450	17/02-08
EOS.O2	ETAT SENEGAL 5.50% 2007-2012				NC			10,000	10,000	9,250	10,750	204.93	ACD	A	550.000	18-oct
EOS.O3	ETAT SENEGAL 6.75% 2010-2015	50	9900 / 10000	50	NC			9,900	9,900	9,160	10,640	197.88	ACD	A	675.000	16-nov
EOT.O2	ETAT TOGOLAIS 6.50% 2011-2016	100	9900 /		NC			9,900	9,900	9,160	10,640	626.91	ACD	A	650.000	15-mars
PAAC.O1	PAA 6.95% 2010-2017				NC			9,900	9,900	9,160	10,640	177.27	ACD	S	338.639	28/05-11
PADS.O2	PAD 7% 2010-2017				NC			10,000	10,000	9,250	10,750	118.46	ACD	S	304.500	22/06-12
PALC.O1	PALMCI 7% 2009-2016	989	10000 /		NC			10,000	10,000	9,250	10,750	122.16	ACD	S	343.000	28/06-12
SEM.O1	SEMA 6.85% 2007-2012				NC			10,000	10,000	9,250	10,750	161.64	ACD	S	297.975	24/05-11
SHAF.O2	SHELTER AFRIQUE 6% 2008-2014				NC			10,000	10,000	9,250	10,750	167.67	ACD	S	299.178	21/05-11
STRAC.O1	SOTRA 6.80% 2007-2012				NC			9,800	9,800	9,065	10,535	442.45	AC	A	666.400	03-juil
TGTLT.O1	TOGO TELECOM 6.50% 2007-2014	46	5800 /		NC			6,000	6,000	5,550	6,450	16.58	ACD	S	188.116	15/02-08
TPBF.O2	TPBF 6.50% 2011-2016	50	10000 /		NC			10,000	10,000	9,250	10,750	127.87	ACD	A	650.000	21-déc
TPCI.O8	TPCI 6.95% 2009-2014	1	9800 / 10000	200	9,800	24	235,200	9,800	9,800	9,065	10,535	400.96	ACD	A	696.904	05-août
TPCI.O9	TPCI 6.25% 2010-2013		/ 9700	7	NC			9,800	9,800	9,065	10,535	471.31	IF	A	625.000	31-mai
TPCI.O10	TPCI 7% 2010-2017	205	10000 / 10300	226	10,000	270	2,700,000	10,000	10,000	9,250	10,750	292.62	AC	A	700.000	01-oct
TPCI.O11	TPCI 6.5% 2011-2016	3,500	9300 / 10000	11,700	NC			10,000	10,000	9,250	10,750	300.96	AC	A	650.000	15-sept
<b>TOTAL</b>						<b>319</b>	<b>3,185,200</b>									
<b>OBLIGATIONS KOLAS</b>																
AFD.O1	AFD 5.25% 2008-2016				NC			9,900	9,900	9,160	10,640	510.66	IF	A	525.000	12-mars
<b>TOTAL</b>																
<b>TOTAL-Marché des obligations</b>						<b>319</b>	<b>3,185,200</b>									

**Légende:**

Type Amort: Type d'Amortissement - IF: IN FINE - AC: AMORTISSEMENT CONSTANT - AD: AMORTISSEMENT DEGRESSIF - ACD: AMORTISSEMENT DIFFERE CONSTANT

Période: Périodicité de paiement des coupons - A: annuelle - S: Semestrielle - T: Trimestrielle

Eché.: Echéance de paiement des intérêts

Mentions: NC: Non Coté Ex: Ex-coupon ou Ex-droit SP: Suspendu DIF: Différé

**Avis, Décisions, Instructions & Circulaires du jour**

Les Avis et Instructions sont disponibles auprès des Antennes Nationales de Bourse et sur le site internet de la BRVM : [www.brvn.org](http://www.brvn.org)

**Erratum:**



# Official Newsletter

## BOURSE REGIONALE DES VALEURS MOBILIERES S.A.

LIMITED COMPANY CAPITAL XOF 3 062 040 000

Head Office: Abidjan - COTE D'IVOIRE

Address: 18, Rue Joseph Anoma (Rue des Banques) – 01 B.P. 3802 Abidjan

Tel: (225) 20 326 685 / 20 326 686 Fax : (225) 20 326 684

Website : [www.brvm.org](http://www.brvm.org)

March 2, 2012

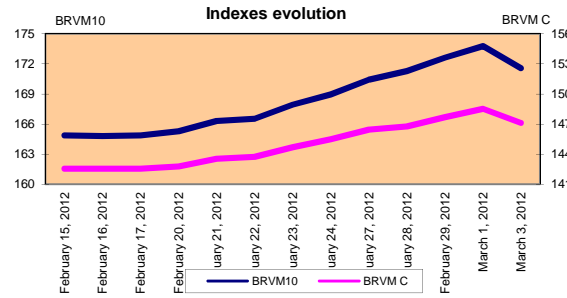
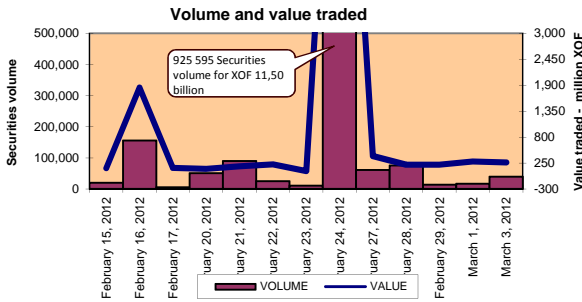
Vol : 15 N° : 44

### March 2, 2012 Session

#### Reference Indexes

Base = 100 To September 15th, 1998	Close	Change		Previous Close	Market Capitalization XOF
		Value	%		
BRVM 10	171.57	-2.20	-1.27%	173.77	2,604,022,797,434
BRVM Composite	147.12	-1.40	-0.94%	148.51	3,368,013,874,869

<b>Bonds Market Capitalization ( XOF)</b>	<b>800,349,398,400</b>
---	------------------------



#### Sectoral Indexes

Base = 100 on June 14th, 1999	Close	Change		Previous Close	Number of Companies
		Value	%		
BRVM - Industry	78.23	0.05	0.06%	78.18	13
BRVM - Services Publics	369.17	-0.06	-0.02%	369.23	4
BRVM - FinaUnlistedial	52.69	-2.00		54.69	8
BRVM - Transuspendedortation	201.55	0.00	0.00%	201.55	2
BRVM - Agriculture	454.74	-3.03	-0.66%	457.77	4
BRVM - Distribution	105.35	1.20	1.15%	104.16	7
BRVM - Others Sectors	59.26	0.00	0.00%	59.26	1

#### Market Summary

	Volume Traded	Total Value Traded (XOF)	Number of Transactions	Number of securities Traded	securities			
					Gains	Losses	traded	
Stocks	39,153	261,706,654	98	20	7	4	9	
Bonds	319	3,185,200	7	3	0	0	3	
Rights	0	0	0	0	0	0	0	

Most Actives securities		Raise			Drop		
securities	Volume	securities	Price	Change	securities	Price	Change
ECOBANK TRANS. INCORP. TG	31,339	CFAO CI	16,125	1125	SAPH CI	47,100	-1,900
PALM CI	5,674	SOGB CI	70,000	1000	SOGB CI	42,000	-1,000
SOGB CI	720	PALM CI	20,500	500	CIE CI	24,900	-90
SONATEL SN	525	CEDA CI	1,960	260	ECOBANK TRANS. INCORP. TG	36	-2
BANK OF AFRICA NG	314	SICABLE CI	32,100	100			

#### International Exchange indexes

African exchanges	Indexes	Close 2-mars-12	Change Previous Close Session	indexes 30-déc.-11	Other exchanges	Indexes	Close 2-mars-12	Changes Previous Close Session	Indexes 30-déc.-11
SABLAUnlistedA	MADEX	9,367.47	-0.50%	9011.57	LONDRES (*)	FOOTSIE 100	5,924.51	-0.11%	5.572,28
LAGOS (*)	NSE	20,193.40	0.35%	20,730.63	NEW YORK (*)	DJIA	12,960.30	0.22%	12.217,56
TUNIS (*)	TUNINDEX	4,785.46	0.35%	4,722.25	TOKYO (*)	NIKKEI 225	9,777.03	0.72%	8.455,35

(\*) Indexes of the day before

(\*\*) Indexes at 11 H00 GMT

#### Announced Coupons

Symbol	securities	Coupon		
		Net Income (XOF)	Detachment Date	Payment Date

NA: Not Available

STOCKS MARKET

March 2, 2012 Session

Symbol	Security	Classify Stock exchange Capitalization	Qty	Price Bid. /Ask.	Qty	Curr. Price	Volume	Value	Previous Price	Next Session			Dividend paid		Year 2012	
										Price Référence	Price Range		Net Income	Date	Low	High
<b>INDUSTRY - SECTOR</b>																
CABC	SICABLE CI	C	29	32100 /		32,100	10	321,000	32,000	32,100	29,695	34,505	5,220	August 29, 2011	29,000	32,100
CDAC	CEDA CI	C	5	1960 /		1,960	20	39,200	1,700	1,960	1,815	2,105	630	July 7, 2000	1,600	4,165
FTSC	FILTISAC CI	C	415	2600 / 2650	4,539	2,650	32	84,800	2,650	2,650	2,455	2,845	321	July 19, 2010	2,500	2,700
NEIC	NEI CI	C	8	3000 /		NC			3,000	3,000	2,775	3,225	225	June 28, 2001	3,000	3,000
N TLC	NESTLE CI	B	1	43000 / 48000	10	NC			43,000	43,000	39,775	46,225	630	August 12, 2011	43,000	48,000
SEMC	CROWN SIEM CI	B		/ 22000	18	NC			22,000	22,000	20,350	23,650	675	September 28, 2011	21,995	23,640
SIVC	SIVOA CI	C	29	6700 / 7000	24	7,000	13	91,000	7,000	7,000	6,475	7,525	540	September 13, 2011	6,700	7,200
SLBC	SOLIBRA CI	A	1	185220 /		NC			172,300	172,300	159,380	185,220	16,380	July 7, 2011	163,000	172,300
SMBC	SMB CI	B	589	19000 / 20000	20	19,000	11	209,000	19,000	19,000	17,575	20,425	344	September 14, 2011	19,000	20,425
STBC	SITAB CI	B	15	65100 /		65,100	49	3,189,900	65,000	65,100	60,220	69,980	8,940	July 21, 2011	63,000	65,100
TTRC	TRITURAF CI - Company in Liquidation	C		/ 925	50	NC			1,000	1,000	925	1,075	1,440	July 19, 2002	1,000	1,000
UNLC	UNILEVER CI	B	4	37995 / 37995	4	NC			38,505	38,505	35,620	41,390	2,421	July 2, 2010	38,000	38,515
UNXC	UNIWAX CI	C		/ 7000	71	7,000	4	28,000	7,000	7,000	6,475	7,525	1,350	June 6, 2003	7,000	9,675
<b>TOTAL</b>							<b>139</b>	<b>3,962,900</b>								
<b>PUBLICS UTILITIES - SECTOR</b>																
CIEC	CIE CI	B	2	24000 / 24900	2	24,900	97	2,415,300	24,990	24,900	23,035	26,765	1,962	July 4, 2011	16,500	25,850
ONTBF	ONATEL BF	A		/ 40000	188	NC			40,000	40,000	37,000	43,000	2,625	July 15, 2011	40,000	44,000
SDCC	SODE CI	B	58	26000 / 28975	2	26,000	36	936,000	26,000	26,000	24,050	27,950	2,385	July 4, 2011	18,000	28,975
SNTS	SONATEL SN	A	4	126000 / 150000	177	126,000	525	66,150,000	126,000	126,000	116,550	135,450	12,600	April 28, 2011	120,000	126,000
<b>TOTAL</b>							<b>658</b>	<b>69,501,300</b>								
<b>FINANCIAL - SECTOR</b>																
BICC	BICI CI	B	1,289	34000 /		NC			33,005	33,005	30,530	35,480	432	October 24, 2011	31,000	33,005
BOAB	BANK OF AFRICA BN	B	20	49500 /		NC			49,055	49,055	45,380	52,730	3,255	May 2, 2011	48,000	49,055
BOABF	BANK OF AFRICA BF	B	831	36000 / 36000	6	NC			35,600	35,600	32,930	38,270	2,125	May 3, 2011	32,000	35,600
BOAC	BANK OF AFRICA CI	B	12	27000 / 27500	289	27,000	60	1,620,000	27,000	27,000	24,975	29,025	1,800	June 2, 2010	26,800	29,005
BOAN	BANK OF AFRICA NG	B	50	31000 / 31500	303	31,500	314	9,891,000	31,500	31,500	29,140	33,860	2,250	April 13, 2011	30,000	33,000
ETIT	ECOBANK TRANS. INCORP. TG (*)	A	105,556	36 / 38	243,435	36	31,339	1,128,204	38	36	34	38	1,828	July 27, 2011	36	38
SAFC	SAFCA CI	C	20	17000 /		NC			17,000	17,000	15,725	18,275	1,440	July 29, 2011	17,000	17,005
SGBC	SGB CI	A	38	41500 / 42000	457	42,000	127	5,334,000	43,000	42,000	38,850	45,150	3,992	September 9, 2011	35,100	45,000
<b>TOTAL</b>							<b>31,840</b>	<b>17,973,204</b>								
<b>TRANSPORTATION - SECTOR</b>																
SDSC	BOLLORE AFRICA LOGISTICS CI	B	31	40000 / 43105	74	40,000	34	1,360,000	40,000	40,000	37,000	43,000	3,428	June 8, 2011	40,000	48,000
SVOC	MOVIS CI	C	5	3115 /		NC			2,900	2,900	2,685	3,115	270	July 5, 1999	2,700	2,900
<b>TOTAL</b>							<b>34</b>	<b>1,360,000</b>								
<b>AGRICULTURE - SECTOR</b>																
PALC	PALM CI	A	1,750	20050 / 20500	30	20,500	5,674	116,317,000	20,000	20,500	18,965	22,035	225	July 21, 2000	15,000	20,500
SICC	SICOR CI	C	5	3795 /		NC			3,795	3,795	3,515	4,075	1,919	September 25, 2000	3,795	3,795
SOGC	SOGB CI	A	1,589	70000 / 73000	1,350	70,000	720	50,400,000	69,000	70,000	64,750	75,250	8,334	June 27, 2011	52,000	70,000
SPHC	SAPH CI	A	78	47100 / 48900	50	47,100	30	1,413,000	49,000	47,100	43,570	50,630	6,930	September 22, 2011	39,000	49,000
<b>TOTAL</b>							<b>6,424</b>	<b>168,130,000</b>								
<b>DISTRIBUTION - SECTOR</b>																
ABJC	SERVAIR ABIDJAN CI	C	10	9005 / 9995	15	NC			9,000	9,000	8,325	9,675	225	July 13, 2000	7,445	9,500
BNBC	BERNABE CI	C	1	29500 /		NC			29,000	29,000	26,825	31,175	3,150	July 27, 2011	25,500	29,000
CFAC	CFAO CI	B	192	16125 / 17000	50	16,125	8	129,000	15,000	16,125	14,920	17,330	987	July 21, 2011	14,000	16,505
PRSC	SDA CI	B	50	80000 /		NC			80,000	80,000	74,000	86,000	11,250	June 24, 2011	80,000	84,000
SHEC	SHELL CI	B	40	13005 /		13,005	50	650,250	13,000	13,005	12,030	13,980	828	August 31, 2011	12,500	13,490
SRIC	SARI CI	C	1	35000 /		NC			35,000	35,000	32,375	37,625	2,309	July 21, 2011	33,245	35,735
TTLC	TOTAL CI	B	3	71000 /		NC			70,500	70,500	65,215	75,785	2,170	August 10, 2011	70,000	74,000
<b>TOTAL</b>							<b>58</b>	<b>779,250</b>								
<b>OTHERS SECTORS</b>																
STAC	SETAO CI	C		/ 4800	94	NC			4,800	4,800	4,440	5,160			4,800	4,800
<b>TOTAL</b>																
<b>TOTAL - STOCKS MARKET</b>							<b>39,153</b>	<b>261,706,654</b>								

Legend  
 (\*) the capital of the company includes convertible preference shares after 3 to 5 years into common shares.  
 Mentions : NC: Unlisted Ex: Ex-coupon or Ex-right SP: Suspended DIF: Differed

Classify Stock exchange Capitalization :

- A: Companies having a stock exchange capitalization Higher than XOF 100 billion.
- B: Companies having a stock exchange capitalization Ranging between XOF 10 billion and XOF 100 billion.
- C: Companies having a Lower stock exchange capitalization or equalizes to XOF 10 billion.

RIGHTS MARKET

Symbol	Security	Qty	Price Bid. /Ask.	Qty	Curr. Price	Volume	Value	Previous Price	Next Session		Parity	Trading Period	
									Reference Price	Price Range		Start	End
<b>TOTAL-RIGHTS MARKET</b>													

Parity: y to x means y rights for x new shares

**BONDS MARKET**

March 2, 2012 Session

Symbol	Security	Qty	Price Bid./Ask.	Qty	Curr. Price	Volume	Value	Previous Price	Next Session		Coupon Income	Type Amort	Bond Coupon			
									Price Référence	Price Range			Period	Net Income	Payment date	
<b>REGIONAL BOND</b>																
BIDC.O1	BIDC 5.60% 2006-2013				NC			10,000	10,000	9,250	10,750	312.13	ACD	A	560.000	August 11, 2011
BIDC.O2	BIDC 6.75 2010-2017	188	10000 /		10,000	25	250,000	10,000	10,000	9,250	10,750	277.40	ACD	S	337.500	04/04-10
BOAB.O2	BOA BENIN 6.20% 2009-2014		/ 10000	60	NC			9,900	9,900	9,160	10,640	402.86	AC	A	582.800	June 23, 2011
BOABF.O2	BOA BURKINA F. 6.20% 2009-2014				NC			10,000	10,000	9,250	10,750	402.86	AC	A	582.800	June 23, 2011
BOAC.O1	BOA - CI 6.20% 2009-2014				NC			10,000	10,000	9,250	10,750	420.01	AC	A	607.600	June 23, 2011
BOAD.O7	BOAD 5% 2005-2013				NC			10,000	10,000	9,250	10,750	89.04	ACD	A	500.000	December 28, 2011
BOAD.O9	BOAD 5% 2006-2014				NC			10,000	10,000	9,250	10,750	32.88	ACD	A	500.000	February 7, 2012
BOAD.O10	BOAD 4.75% 2006-2012				NC			10,000	10,000	9,250	10,750	31.23	ACD	A	475.000	February 7, 2012
BOAM.O2	BOA MALI 6.50% 2009-2014				NC			10,000	10,000	9,250	10,750	390.91	AC	A	565.500	June 23, 2011
BOAN.O1	BOA NIGER 6.50% 2009-2014				NC			9,850	9,850	9,115	10,585	390.91	AC	A	565.500	June 23, 2011
BOAS.O1	BOA SENEGAL 6.50% 2009-2014				NC			9,800	9,800	9,065	10,535	422.36	IF	A	611.000	June 23, 2011
CAAB.O3	CAA BENIN 6.50% 2011-2016				NC			10,000	10,000	9,250	10,750	202.46	ACD	A	650.000	November 9, 2011
CLTB.O2	CELTEL BURKINA 6.35% 2007-2013				NC			10,000	10,000	9,250	10,750	22.83	ACD	S	298.450	17/02-08
EOS.O2	ETAT SENEGAL 5.50% 2007-2012				NC			10,000	10,000	9,250	10,750	204.93	ACD	A	550.000	October 18, 2011
EOS.O3	ETAT SENEGAL 6.75% 2010-2015	50	9900 / 10000	50	NC			9,900	9,900	9,160	10,640	197.88	ACD	A	675.000	November 16, 2011
EOT.O2	ETAT TOGOLAIS 6.50% 2011-2016	100	9900 /		NC			9,900	9,900	9,160	10,640	626.91	ACD	A	650.000	March 15, 2011
PAAC.O1	PAA 6.95% 2010-2017				NC			9,900	9,900	9,160	10,640	177.27	ACD	S	338.639	28/05-11
PADS.O2	PAD 7% 2010-2017				NC			10,000	10,000	9,250	10,750	118.46	ACD	S	304.500	22/06-12
PALC.O1	PALMCI 7% 2009-2016	989	10000 /		NC			10,000	10,000	9,250	10,750	122.16	ACD	S	343.000	28/06-12
SEM.O1	SEMA 6.85% 2007-2012				NC			10,000	10,000	9,250	10,750	161.64	ACD	S	297.975	24/05-11
SHAF.O2	SHELTER AFRIQUE 6% 2008-2014				NC			10,000	10,000	9,250	10,750	167.67	ACD	S	299.178	21/05-11
STRAC.O1	SOTRA 6.80% 2007-2012				NC			9,800	9,800	9,065	10,535	442.45	AC	A	666.400	July 3, 2011
TGTLT.O1	TOGO TELECOM 6.50% 2007-2014	46	5800 /		NC			6,000	6,000	5,550	6,450	16.58	ACD	S	188.116	15/02-08
TPBF.O2	TPBF 6.50% 2011-2016	50	10000 /		NC			10,000	10,000	9,250	10,750	127.87	ACD	A	650.000	December 21, 2011
TPCI.O8	TPCI 6.95% 2009-2014	1	9800 / 10000	200	9,800	24	235,200	9,800	9,800	9,065	10,535	400.96	ACD	A	696.904	August 5, 2011
TPCI.O9	TPCI 6.25% 2010-2013		/ 9700	7	NC			9,800	9,800	9,065	10,535	471.31	IF	A	625.000	May 31, 2011
TPCI.O10	TPCI 7% 2010-2017	205	10000 / 10300	226	10,000	270	2,700,000	10,000	10,000	9,250	10,750	292.62	AC	A	700.000	October 1, 2011
TPCI.O11	TPCI 6.5% 2011-2016	3,500	9300 / 10000	11,700	NC			10,000	10,000	9,250	10,750	300.96	AC	A	650.000	September 15, 2011
TOTAL						<b>319</b>	<b>3,185,200</b>									
<b>KOLAS BOND</b>																
AFD.O1	AFD 5.25% 2008-2016				NC			9,900	9,900	9,160	10,640	510.66	IF	A	525.000	March 12, 2011
TOTAL																
<b>TOTAL-BONDS MARKET</b>						<b>319</b>	<b>3,185,200</b>									

**Legend**

Type Amort: Type d'Amortissement - IF: IN FINE - AC: AMORTISSEMENT CONSTANT - AD: AMORTISSEMENT DEGRESSIF - ACD: AMORTISSEMENT DIFFERE CONSTANT

Period : Coupons Payment Period - A: Yearly - S: Semi annual - T: Quaterly

Payment date : Interest Payment expiry

Mentions : NC: Unlisted Ex: Ex-coupon ou Ex-right SP: Suspended DIF: Differed

**Notices, Decisions, Instructions & Circulars of the day**

 Notices and instructions are available with National Offices and on the Website of BRVM: [www.brvm.org](http://www.brvm.org)
**Erratum:**